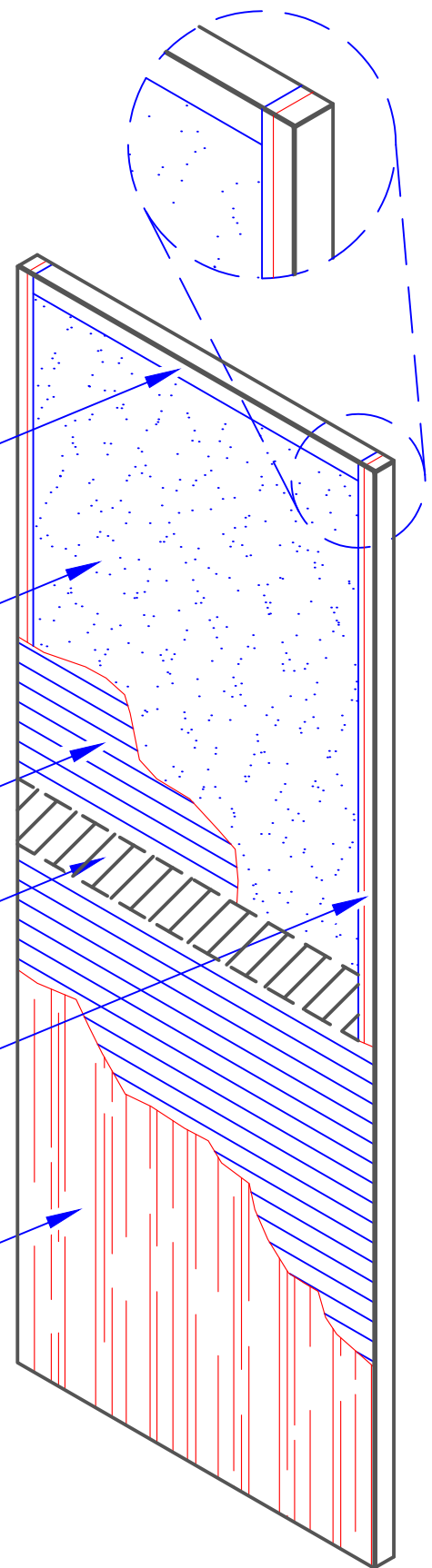




20 MIN WOOD VENEER DUTCH DOOR CONSTRUCTION SPECS

Prescott Industries 5-Ply Premium Flush Dutch Door Construction:
All Prescott Industries Premium Architectural Doors Type PC-5/FD-3 meet or exceed standards set forth by WDMA I.S.1-A and the AWI for PC-5 as tested per A.S.T.M. E-152 by Warnock Hersey International. Prescott Industries is authorized through INTERTEK to construct and mark 20-minute rated fire doors.

- Top and Bottom Rails:
1-3/8" Thick SCL
(Stranded Composite Lumber)
- Core Type:
Particle Board meets or exceeds ANSI A208.1
for physical/mechanical properties
For environmental properties meets or exceeds
EPPS CPA-3-08 (100% Recycled Fiber)
- Crossband:
1/10" High Density Fiber Crossband
- Mid-rail:
5" LSL mid-rail where door would be separated
- Stiles:
Hard wood over Stranded Composite Lumber (SCL)
Backer for stained edges
1-3/8" thick = 7/8" Solid Maple + 1/2" SCL before pre-fit
- Faces:
White Maple, Red Oak, Birch, and more.
Premium, Grade A wood for wood face.



Adhesives: Meet requirements of WDMA I.S.1A, C-6

Door Thickness: 1-3/4"

Maximum Size: 4' x 9'

Warranty: Premium Architectural Doors (Lifetime Warranty)

Note: Interior use only. (Exterior use applications not warranted.)